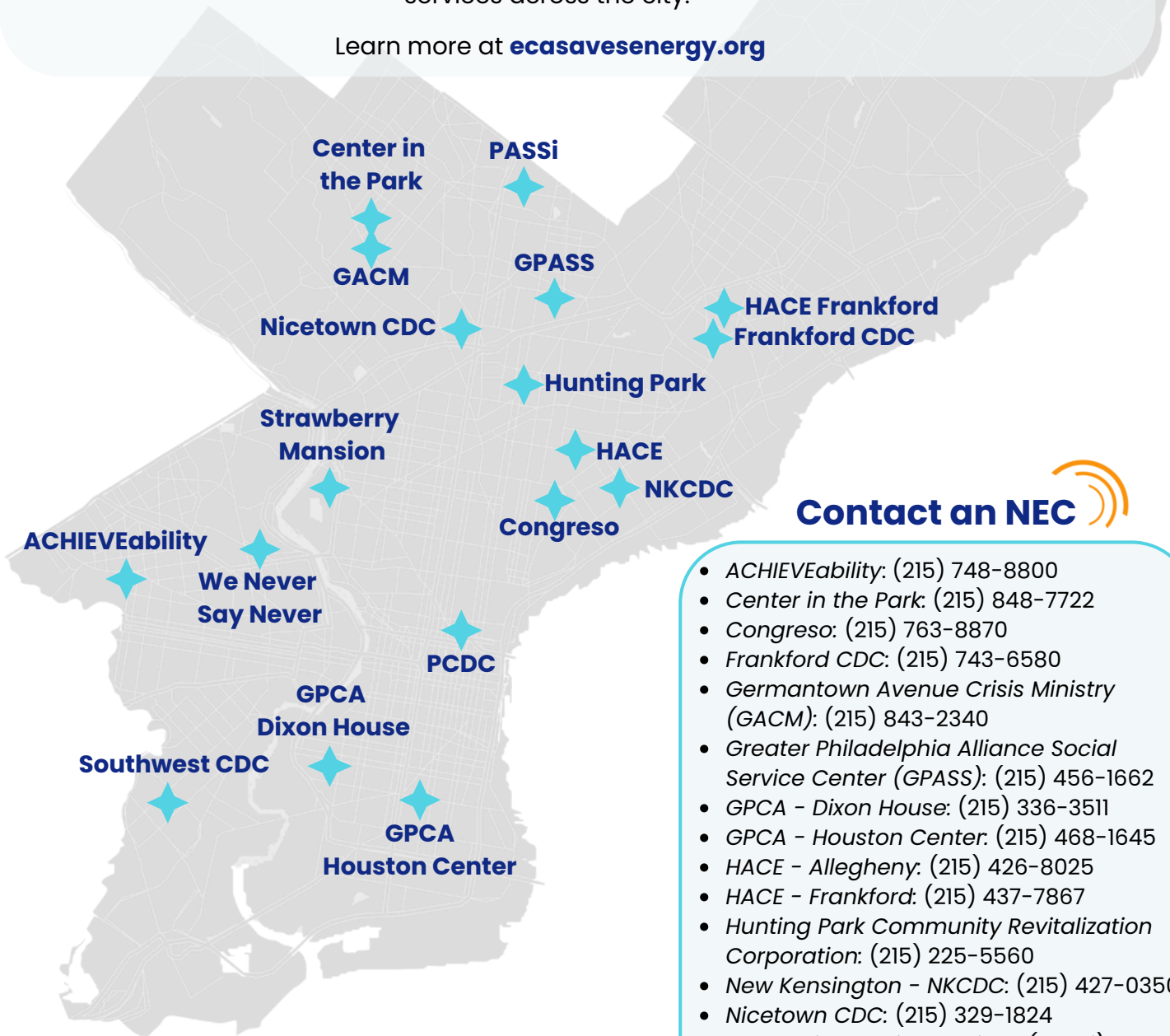


NEIGHBORHOOD ENERGY CENTERS

YOUR ONE STOP SHOP

Energy Coordinating Agency (ECA) supports 16 Neighborhood Energy Centers (NECs) to serve as one-stop-shops for community members to learn about utility bill assistance programs, home repair and weatherization, budget counseling, and connection to services across the city.

Learn more at ecasavesenergy.org



Contact an NEC

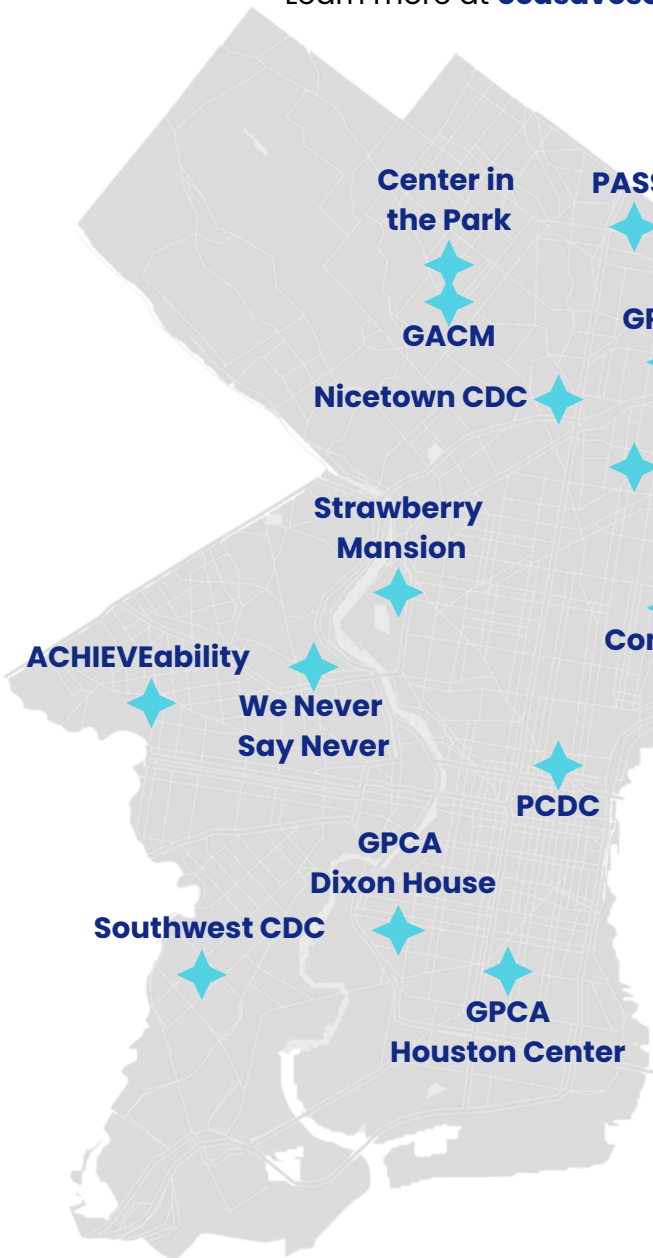
- *ACHIEVEability*: (215) 748-8800
- *Center in the Park*: (215) 848-7722
- *Congreso*: (215) 763-8870
- *Frankford CDC*: (215) 743-6580
- *Germantown Avenue Crisis Ministry (GACM)*: (215) 843-2340
- *Greater Philadelphia Alliance Social Service Center (GPASS)*: (215) 456-1662
- *GPCA - Dixon House*: (215) 336-3511
- *GPCA - Houston Center*: (215) 468-1645
- *HACE - Allegheny*: (215) 426-8025
- *HACE - Frankford*: (215) 437-7867
- *Hunting Park Community Revitalization Corporation*: (215) 225-5560
- *New Kensington - NKCDC*: (215) 427-0350
- *Nicotown CDC*: (215) 329-1824
- *Penn Asian Senior Services (PASSi)*: (215) 572-1234
- *Philadelphia Chinatown Development Corporation (PCDC)*: (215) 922-6156
- *Southwest CDC*: (215) 729-0800
- *Strawberry Mansion NAC*: (215) 235-7505
- *We Never Say Never*: (215) 452-0440

NEIGHBORHOOD ENERGY CENTERS

YOUR ONE STOP SHOP

Energy Coordinating Agency (ECA) supports 16 Neighborhood Energy Centers (NECs) to serve as one-stop-shops for community members to learn about utility bill assistance programs, home repair and weatherization, budget counseling, and connection to services across the city.

Learn more at ecasavesenergy.org



Contact an NEC

- **ACHIEVEability:** (215) 748-8800
- **Center in the Park:** (215) 848-7722
- **Congreso de Latinos Unidos:** (215) 763-8870
- **Frankford CDC:** (215) 743-6580
- **Germantown Avenue Crisis Ministry (GACM):** (215) 843-2340
- **Greater Philadelphia Alliance Social Service Center (GPASS):** (215) 456-1662
- **GPCA - Dixon House:** (215) 336-3511
- **GPCA - Houston Center:** (215) 468-1645
- **HACE - Allegheny:** (215) 426-8025
- **HACE - Frankford:** (215) 437-7867
- **Hunting Park Community Revitalization Corporation:** (215) 225-5560
- **New Kensington - NKCDC:** (215) 427-0350
- **Nicotown CDC:** (215) 329-1824
- **Penn Asian Senior Services (PASSi):** (215) 572-1234
- **Philadelphia Chinatown Development Corporation (PCDC):** (215) 922-6156
- **Southwest CDC:** (215) 729-0800
- **Strawberry Mansion NAC:** (215) 235-7505
- **We Never Say Never:** (215) 452-0440



- ACHIEVEability: (215) 748-8800
- Center in the Park: (215) 848-7722
- Congreso de Latinos Unidos: (215) 763-8870
- Frankford CDC: (215) 743-6580
- Germantown Avenue Crisis Ministry (GACM): (215) 843-2340
- Greater Philadelphia Alliance Social Service Center (GPASS): (215) 456-1662
- Greater Philadelphia Community Alliance (GPCA):
 - Dixon House (215) 336-3511
 - Houston Center: (215) 468-1645
- Hispanic Association of Contractors + Enterprises (HACE):
 - Main: (215) 426-8025
 - Frankford: (215) 437-7867
- Hunting Park Community Revitalization Corporation: (215) 225-5560
- New Kensington - NKCDC: (215) 427-0350
- Nicetown CDC: (215) 329-1824
- Penn Asian Senior Services (PASSi): (215) 572-1234
- Philadelphia Chinatown Development Corporation (PCDC): (215) 922-6156
- Southwest CDC: (215) 729-0800
- Strawberry Mansion NAC: (215) 235-7505

- We Never Say Never: (215) 452-0440
- ACHIEVEability: (215) 748-8800
- Center in the Park: (215) 848-7722
- Congreso de Latinos Unidos: (215) 763-8870
- Frankford CDC: (215) 743-6580
- Germantown Avenue Crisis Ministry (GACM): (215) 843-2340
- Greater Philadelphia Alliance Social Service Center (GPASS): (215) 456-1662
- Greater Philadelphia Community Alliance (GPCA):
 - Dixon House (215) 336-3511
 - Houston Center: (215) 468-1645
- Hispanic Association of Contractors + Enterprises (HACE):
 - Main: (215) 426-8025
 - Frankford: (215) 437-7867

- Hunting Park Community Revitalization Corporation: (215) 225-5560
- New Kensington - NKCDC: (215) 427-0350
- Nicetown CDC: (215) 329-1824
- Penn Asian Senior Services (PASSi): (215) 572-1234
- Philadelphia Chinatown Development Corporation (PCDC): (215) 922-6156
- Southwest CDC: (215) 729-0800
- Strawberry Mansion NAC: (215) 235-7505
- We Never Say Never: (215) 452-0440